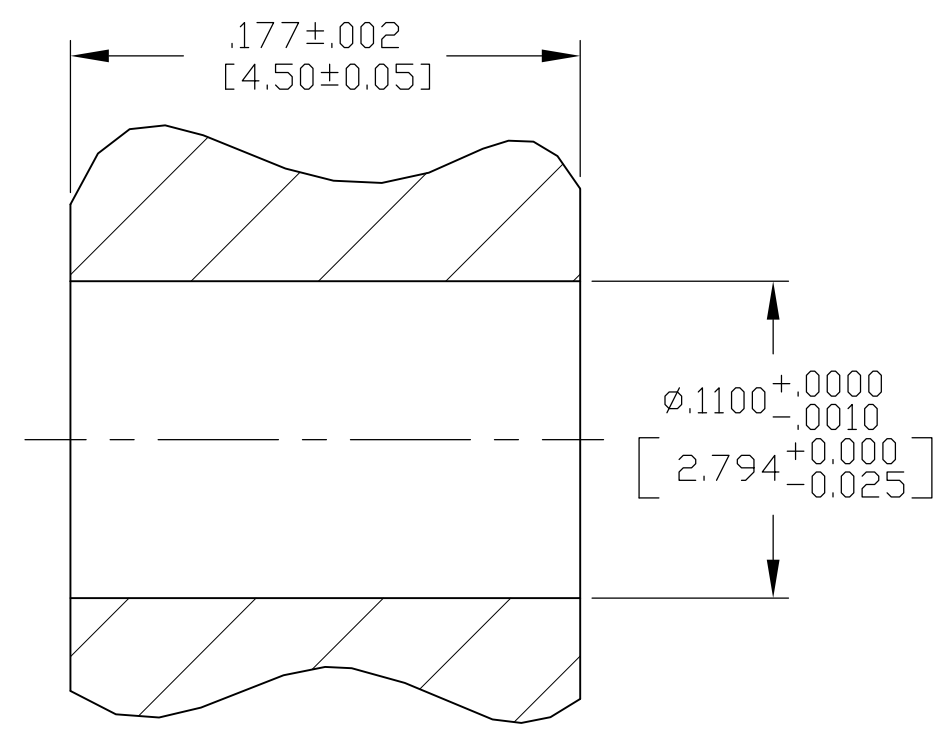
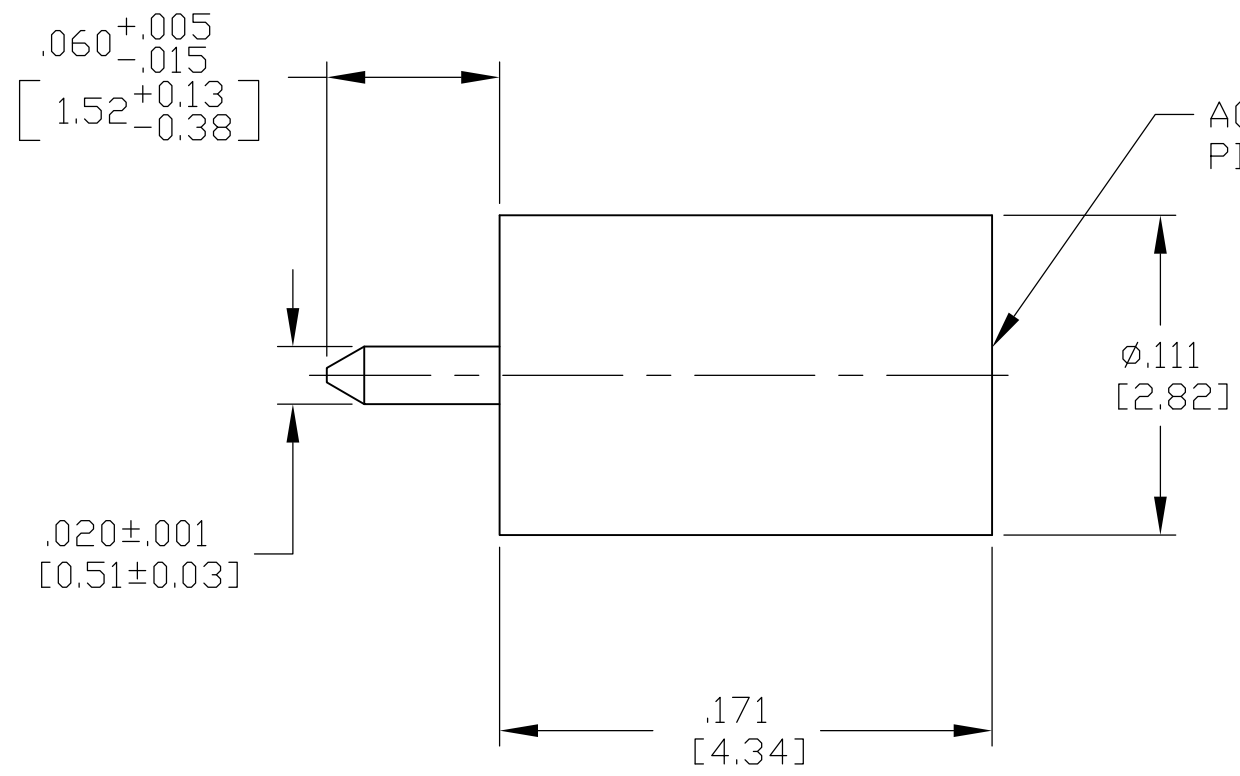


THIS DRAWING IS UNPUBLISHED. RELEASED FOR PUBLICATION
 © COPYRIGHT BY TYCO ELECTRONICS CORPORATION. ALL RIGHTS RESERVED.

LOC	DIST	REVISIONS			
P	LTR	DESCRIPTION	DATE	DWN	APVD
	A	RELEASED	11-12-07	CT	DW

COMPONENT	MATERIAL	FINISH
DIELECTRIC	PTFE FLUOROCARBON PER ASTM-D-1457	N/A
CENTER CONTACT	BERYLLIUM COPPER PER ASTM-B-196 OR ASTM-B-197, ALLOY C17300, CONDITION H	GOLD PLATE PER ASTM-B-488



RECOMMENDED MOUNTING HOLE

1996104-1
PART NUMBER

1. CAPTURED CENTER CONTACT
2. CONTACT & DIELECTRIC TO BE FLUSH TO .010 [0.25] BELOW FACE OF PANEL (BOTH ENDS) WHEN ASSEMBLED.

THIS DRAWING IS A CONTROLLED DOCUMENT.		DWN C.C.THOMAS 11-12-07	Tyco Electronics Corporation Harrisburg, PA 17105-3608													
DIMENSIONS: INCHES [mm]		CHK D.WILSON 11-12-07	NAME CONTACT AND DIELECTRIC ASSEMBLY													
TOLERANCES UNLESS OTHERWISE SPECIFIED:		APVD D.WILSON 11-12-07	PRODUCT SPEC													
<table border="0"> <tr><td>0 PLC</td><td>± -</td></tr> <tr><td>1 PLC</td><td>± -</td></tr> <tr><td>2 PLC</td><td>± -</td></tr> <tr><td>3 PLC</td><td>± .005 [0.13]</td></tr> <tr><td>4 PLC</td><td>± -</td></tr> <tr><td>ANGLES</td><td>± -</td></tr> </table>		0 PLC	± -	1 PLC	± -	2 PLC	± -	3 PLC	± .005 [0.13]	4 PLC	± -	ANGLES	± -	APPLICATION SPEC		RESTRICTED TO
0 PLC	± -															
1 PLC	± -															
2 PLC	± -															
3 PLC	± .005 [0.13]															
4 PLC	± -															
ANGLES	± -															
MATERIAL		WEIGHT		SIZE A3	CAGE CODE 00779											
FINISH		CUSTOMER DRAWING		DRAWING NO G-1996104	RESTRICTED TO											
		SCALE 15:1		SHEET 1 OF 1	REV A											